



Single-Leaf, Double-Leaf or Bi-Fold Designs

Recording Studios

Control Rooms

Studios

Mix Rooms

Wood Veneer Option

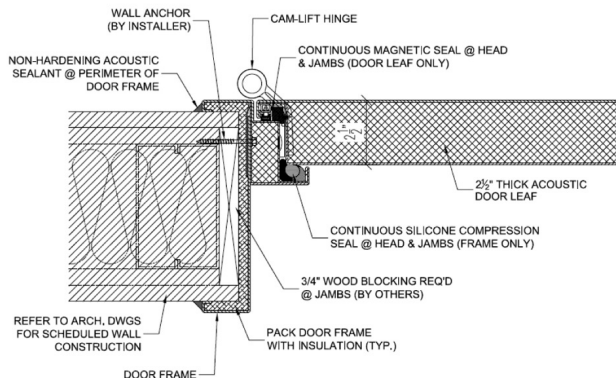
Full Light Option

Music Studios

Pod Cast Rooms

STC-50 and above

Soundproof Doors



eNoiseControl.com

14701 Cumberland Rd, #103

Noblesville, IN 46060

info@eNoise Control.com

Ph: 317.774.1900

eNoise Control can provide for all your sound control door needs.

- Guaranteed acoustic performance
- All doors are tested at Riverbank Laboratories or USG Testing Services Lab, both are independent NVLAP approved testing facilities
- All hardware, seals and hinges are factory installed
- Door includes custom cam-lift hinge design, eliminating the need for a threshold in most applications
- Adjustable mortised bottom seal allows the door to adapt to site floor conditions
- Double magnetic seals at head and jambs
- Split-frame assembly allows installation into existing openings
- All doors with vision panels are factory glazed prior to shipment
- Designed to work with standard building hardware, factory installed if desired
- Ease of operation conforms to ADA
- Available in single-leaf, double-leaf and bi-fold designs
- Wood veneer finish available

All door and frame components are tested as a complete assembly prior to shipment.



Acoustic Performance Data

	1/3 Octave Band Center Frequency, Hz						
	125	250	500	1k	2k	4k	STC
Sound Transmission Loss Data, dB							
QS-45 - 2½" Thick - 11.2 PSF	29	33	41	48	48	50	45
QS-46 - 2½" Thick - 8.6 PSF	36	41	45	51	50	52	46
QS-50 - 2½" Thick - 10.1 PSF	37	42	50	49	51	55	50
QS-51 - 2½" Thick - 10.1 PSF	40	44	48	52	52	55	51
QS-52 - 2½" Thick - 10.5 PSF	40	44	50	53	54	56	52
QS-54 - 3½" Thick - 18.3 PSF	37	47	52	54	55	60	54
QS-56 - 3½" Thick - 20.9 PSF	38	46	55	55	60	63	56

All tests performed by an independent NVLAP accredited acoustical testing facility. The test method conforms with ASTM Designations E90-09 and E413-87

Acoustic Performance Data

	1/3 Octave Band Center Frequency, Hz						
	125	250	500	1k	2k	4k	NIC
Sound Transmission Loss Data, dB							
QS-61-SAHP - 3½" Thick - 19.3 PSF	42	53	59	63	66	71	62
QS-64-SAHP - 5" Thick - 19.7 PSF	51	59	70	70	71	73	70

These are an NIC 62 and 70. Field testing results may vary due to Room Size, Configuration, and Room Acoustics.

eNoise Control

14701 Cumberland Rd, #103
Noblesville, IN 46060

Phone: 317.774.1900

email: info@eNoiseControl.com