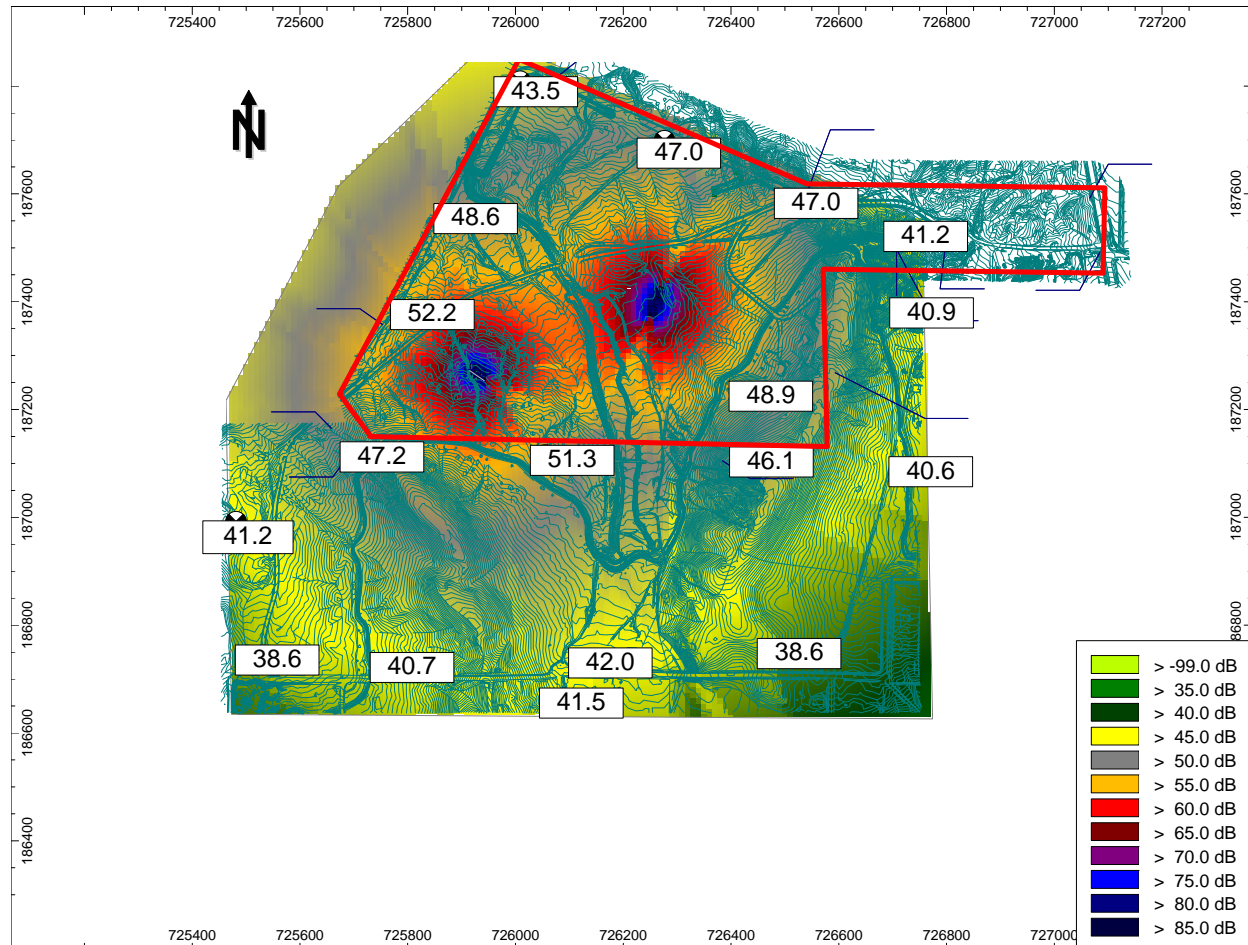


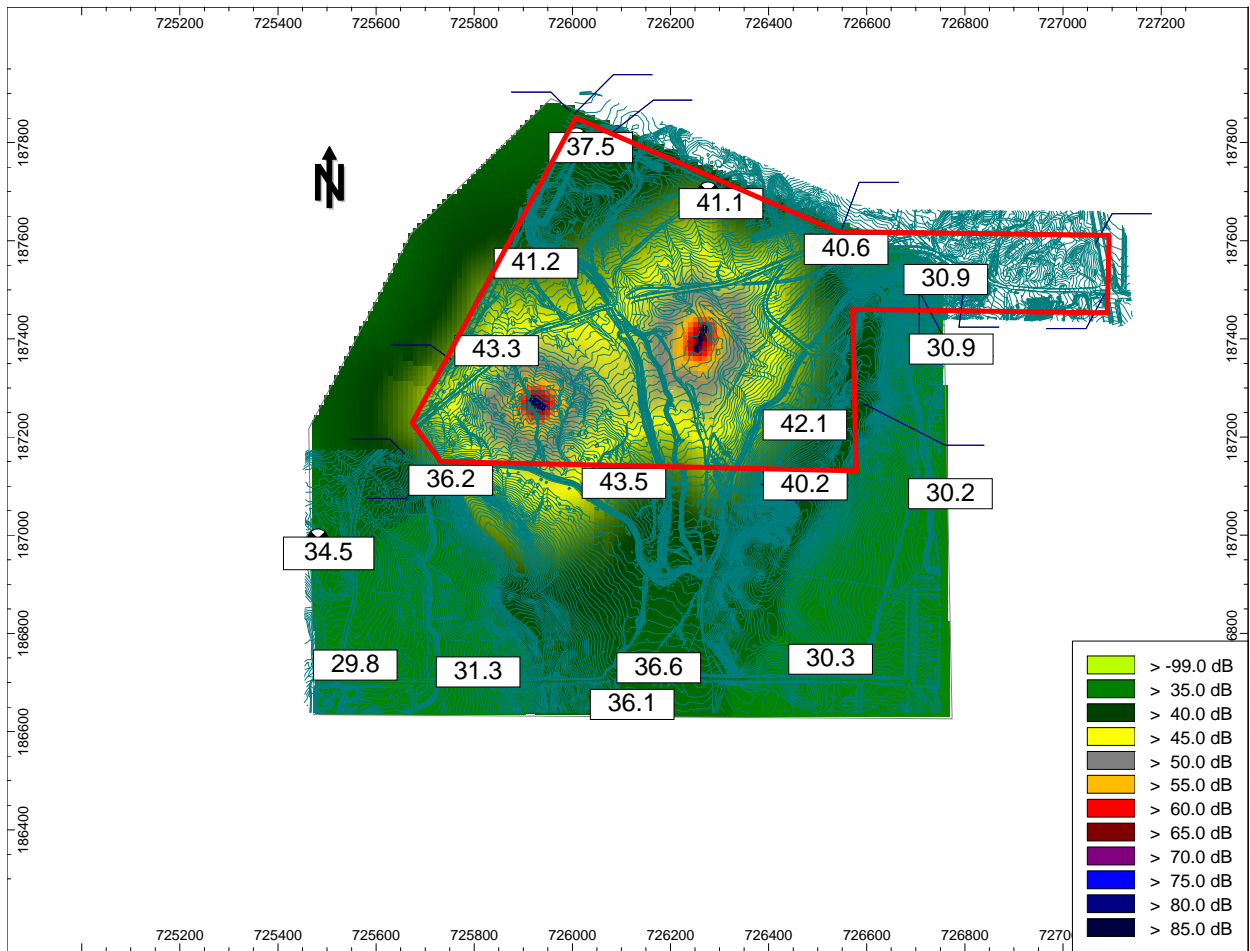
### Sound Survey for Transformers and Reactors

eNoise Control has conducted several sound surveys for clients experiencing complaints from neighbors over transformer or reactor noise. The humming noise coming from the transformers can be a source of annoyance for neighboring properties. Typical applications involved large transformers under load that are located in rural settings where the background ambient sound level is very low. The transformers produce a low frequency hum, typically around 120 Hz. This tonal noise can carry great distances and produce unwanted disturbance at the property line of neighbors adjacent to the transformer yard.

eNoise offers baseline sound level readings, full acoustic reports, and feasible options for reducing noise from the transformer site. Some clients elect to have us perform sound mapping, examples of which are shown below. We use computer aided software to predict noise abatement techniques and how these techniques will lower the outside noise from the transformers.



Sound Map of transformer site before noise mitigation



Sound Map of transformer site after noise mitigation controls