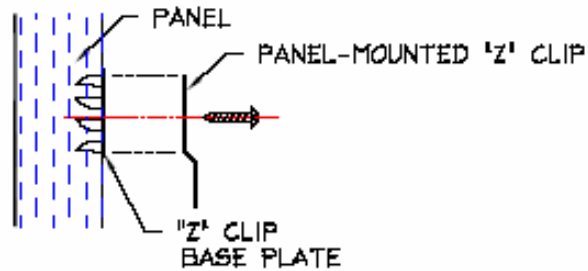
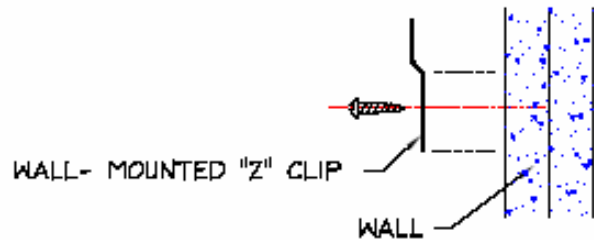


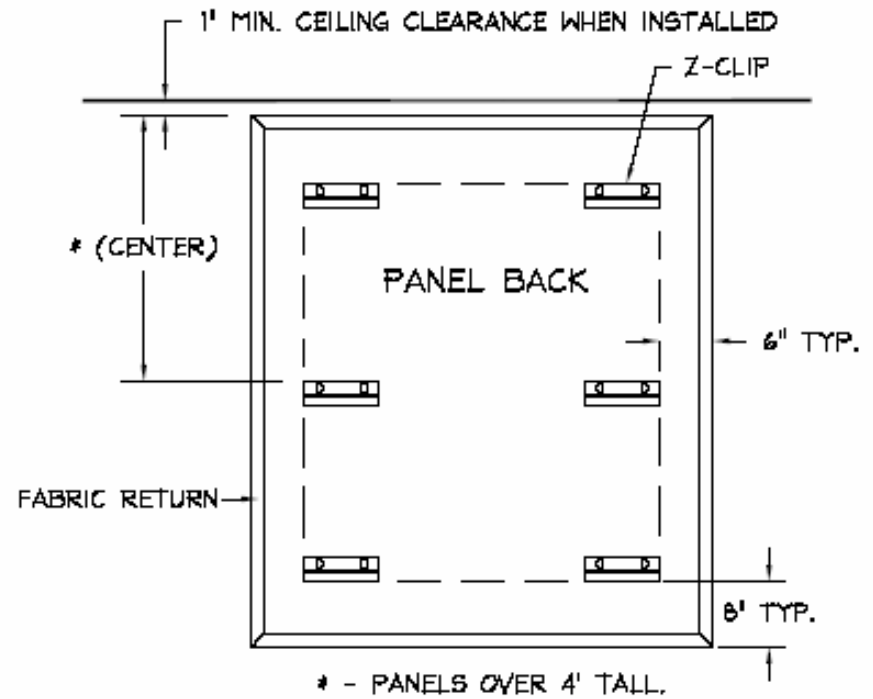
Z - CLIP INSTALLATION



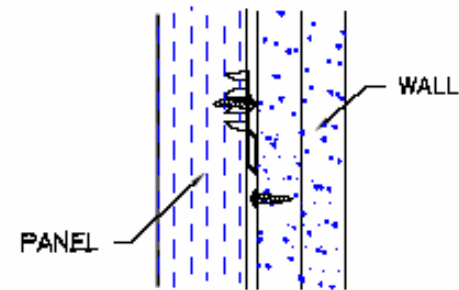
1. POSITION "Z" CLIP ON FACTORY-MOUNTED "Z" CLIP BASE PLATE AS SHOWN ABOVE
NOTE: ALIGN LONG LEG OF "Z" CLIP WITH PREMOUNTED BASE PLATE (USE SLOTS IN Z-CLIPS FOR LEVELING ADJUSTMENT IF NEEDED)
2. SECURE "Z" CLIP WITH (2) PAN HEAD SCREWS (INCLUDED)



3. LOCATE "Z" CLIPS ON WALL PER Z-CLIP POSITIONS ON PANEL BACK
4. SECURE "Z" CLIPS TO WALL WITH (2) SCREWS (BY OTHERS)



PANEL MOUNTED Z-CLIP PLACEMENT



INSTALLED PANEL

5. SLIDE PANEL DOWN ONTO CLIPS UNTIL FIRMLY SEATED